



JAZZ AT LINCOLN CENTER  
ORCHESTRA WITH  
WYNTON MARSALIS

CHRIS BOTTI



K.D. LANG AND  
THE SISS BOOM BANG



Smitty Bell  
Production Director  
(970) 879-5056  
[smitty@stringsmusicfestival.com](mailto:smitty@stringsmusicfestival.com)

# [STRINGS MUSIC PAVILION]

Contact Smitty Bell for more information, 970.879.5056 or [smitty@stringsmusicfestival.com](mailto:smitty@stringsmusicfestival.com)

*An intimate 569 seat music venue in Steamboat Springs, CO. With a unique bow string truss roof design, the stunning architecture allows the audience to enjoy the panoramic views of the Yampa Valley through the retractable glass doors. The Strings Music Pavilion is an exceptional experience for artists and audiences alike.*

**SOUND REINFORCEMENT SYSTEM** Two (2) full range 3-way Danley SH50 loudspeakers and one (1) SH60 loudspeaker in independent Left -Summed Center- Right configuration.

- Six (6) Bag End TA6000S full range 2-way front fill speakers set into the front of the stage.
- Subwoofers: Two (2) DanleyTH212.
- FOH Loudspeaker management and DSP controlled by Biamp Systems AudiaFLEX-CM and loudspeaker amplification provided by Lab Gruppen class D amplifiers.
- Monitors: Eight (8) EAW MicroWedge MW12 full range 2-way floor monitors powered by Lab Gruppen class D amplification.
- The FOH sound/ light booth is located 40' from the front of the stage, center. The FOH Board is a Midas M32 Live. Monitors may be run by iPad via M32-Q App or through a Behringer X32. 40X8 Horizon analog splitter snake – 3 way. Monitor station is stage left.

**92 db limit A-weighted at Front of House Tech Booth.**

**STAGE** 54' x 15' with a thrust to 21' in the center. The back wall is wood veneer with a full length black curtain. No scrim. 5 - Floor Pockets with AC power, XLR Input/Outputs and Mon.

**LIGHTING** Board is ETC Element 1024 with 2 17" LCD Monitors. Light trusses suspended from one ton pick points – no grid. **NO HAZE/FOG**. Lighting appropriate for venue including:

- 36 ETC Source 4 fixtures – Lamped at 575w (14 – 50deg barrels/22 – 36deg barrels)
- 30 – ETC Source 4 Par – (XWFL Lenses installed)
- 20 – Altman PAR 64 – (WFL 1000W)
- 12 – ADJ P64B LEDPar (7 channel mode, custom diffusion optics installed)
- 16 - Martin Stagebar 2L (RGBAW)

## **PROJECTION**

- 1 - Retractable Da-lite 12' X 20' screen, mounted on upstage wall
- Throw angle allows for average height performer to stand approximately eight feet in front of screen without casting video shadows and image disruption.
- 1 - Digital Projection M-Vision 18K Laser Full 1080p projector with HDMI/ 3G SDI Input, center mounted at downstage apron with input at FoH via Decimator MD-LX HDMI to SDI.

## BACKLINE

- Guitar amp: Fender '65 Deluxe Reverb
- Bass amp: Fender Bassman 250 head with Hartke 410XL cabinet
- 1 – Steinway B Grand Piano
- 1 – Steinway D Concert Grand Piano
- 4 – 4' X 8' stage riser platforms, adjustable legs
- 1 - 60's Ludwig Drum kit with Yamaha Hardware
- Communication through RCA two-way radios

*Additional A/V equipment and backline available for rental through High Country Backline in Vail, PSI and PRG in Denver.*

## BACKSTAGE *Wi-Fi in building – no land lines*

- Staging area - 12' X 21' with full size exterior loading door. Trucks must have ramps.
- Green Room I – 36' x 18' with exterior entrance. 2 bathrooms – no shower.
- Green Room II – 9' X 26' with additional stage door entrance. Bathroom in hall adjacent to room. No shower.

## MICROPHONES

- Wireless Microphones 2 - SM58 and 4 - Beta 87a mic capsules, 1 - Shure WL183 Omni Lapel, 6 - Shure WL185 Cardioid Lapel, 1- Shure TL47T Omni Lavalier Twin Plex and 1 - DPA 4288 Dual Ear Cardiod Head mic for below:

4 - Shure QLXD J50 band receivers with handheld and bodypack transmitters

2 - Shure ULX J1 band receivers with handheld and bodypack transmitters

- Wired Microphones

10 - Shure SM58

2 - Shure Beta58a

7 - Shure SM57

2 - Shure Beta57a

1 - Shure Beta52

1 - Shure Beta91a

1 - Sennheiser MD 421 II

4 - Sennheiser E604 with clips

2 - Sennhesier MKH 50

4 - Shure KSM141 (2 Stereo Pairs)

1 - Shure KSM109

4 - Rode NT1

2 - DPA 2011C (Stereo Pair)

2 - DPA 4006 (Main Pair hung for Classical only)

1 - Electro-Voice RE-20

- Direct Boxes

5 - Radial Pro48 Active

1 - Radial Pro D2 Stereo Passive

2 - Radial Pro D1 Passive

1 - Radial JPC PC/AV Active

as of 1 Feb 2023



Green Room 1 36'x18'

bath 1 bath 2

Staging Area  
with Loading  
Door

Green Room 2  
9'x26'

12'x21

6'9"

14'6"

53'

FB 4

FB 5

14'8"

Monitor  
Patch

Stairs

ADA Lift

6'7"

11'8"

FB 1  
Y = 0  
X = 0  
18'6"

FB 3

6'9"

11'8"

**SUMMIT**  
ARCHITECTURAL SYSTEMS  
Summit Integrated Systems  
14000 Highway 105  
Lafayette, CO 80026  
303-469-9252

DATE: 5-11-11  
DRAWN BY: JJ  
CHECKED BY: SIS  
DESIGNED BY: SIS  
PROJECT NO: 303-469-9252  
CONST. DOCS

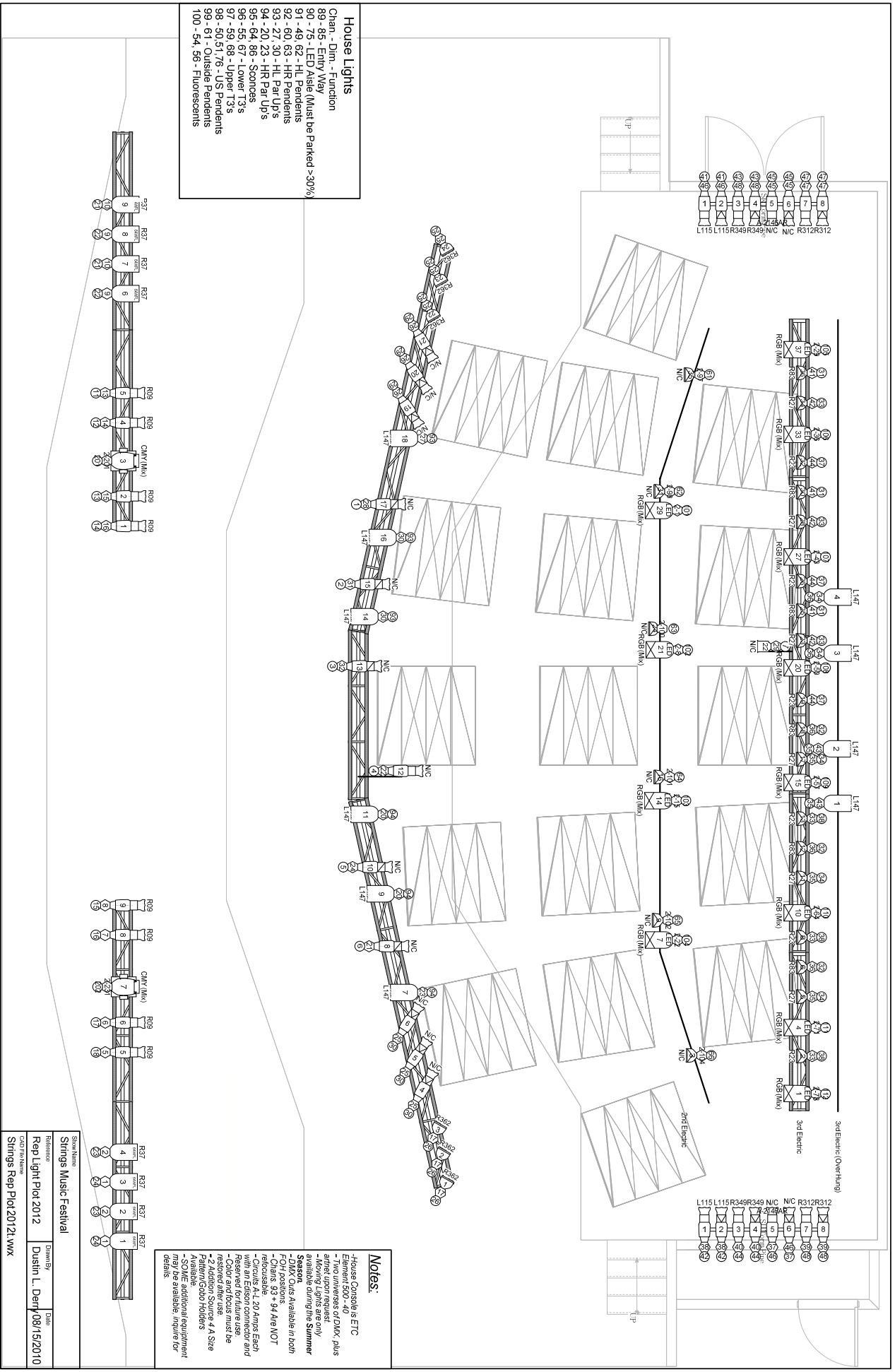
REV: 1  
3-28-11  
ADD SUB CAVITIES

**STRINGS MUSIC PAVILION**  
STEAMBOAT SPRINGS, CO

SHEET TITLE  
FLOOR LEVEL  
AV LAYOUT

SHEET NO.  
AV 1.0

 FLOOR LEVEL AV LAYOUT  
SCALE: 1/2" = 1'



## BUS PARKING

- For single bus tours, bus may be backed in along edge of parking as noted where truck is labeled. Bus with trailer combinations can back perpendicular into parking area between office and pavilion; however
- Handicap Parking is located near and to the right of loading dock door and may not be blocked.
- A single 50 Amp Shore Power is available to the left of the loading dock bay door. Facility does not have cabling for shore power connection. Power connection is as close as thirty-five feet (35') for buses parked in-line with parking lines and eighty to one-hundred feet (80'-100') for buses parked perpendicular next to Strings office. For safety and prevention of trip hazards, no cabling may obstruct handicap parking nor venue side entrance access.
- Two additional 50 Amp Shore Power connections are located at the north (far end) of the office building across from the loading dock door. Buses can access these from both the large and/or small parking lots.
- Best venue access is via Pine Grove Road entrance.
- Steamboat Springs free bus shuttle runs daily throughout the city. Red Line and Night Line routes pickup and drop-off within 1 minute walk to venue. [Link to Steamboat Springs Transit](#)
- Venue Address - 900 Strings Road, Steamboat Springs, Colorado 80487
- Below parking examples are options and not rigid such that handicap parking is not blocked.

